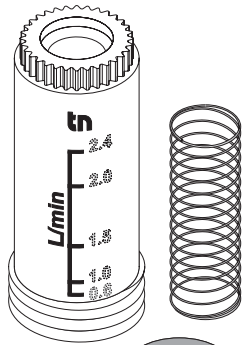


AY 98 TOPMETER 1/2" RL - KIT



i i1

AO 23	AY 98	AO 23	G	l/min	AY 98	l/min
223.5203.____		223.5203.____	1/2"	0.6 2.4	298.2303.000	0.6 2.4
223.5204.____		223.5204.____	1/2"	1.0 4.0	298.2304.000	1.0 4.0
223.5208.____		223.5208.____	1/2"	2.0 8.0	298.2308.000	2.0 8.0

N°	l/min
298.2303.000	0.6 – 2.4
298.2304.000	1.0 – 4.0
298.2308.000	2.0 – 8.0

A a1

a2

+ m1

m2

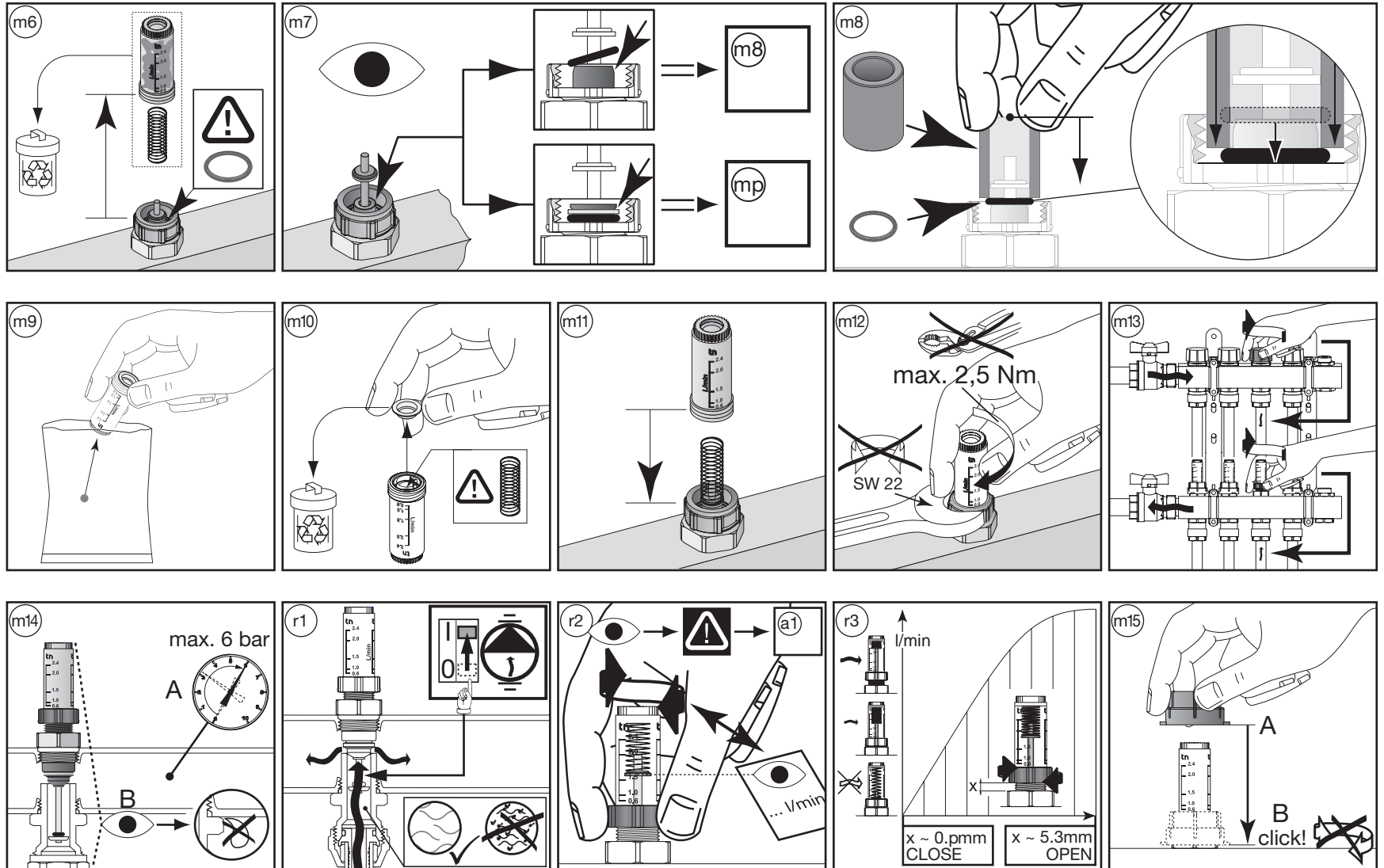
m3

m4

m5

TB	-10...80°C
PB	6 bar

AY 98 TOPMETER 1/2" RL - KIT



· Subject to modifications