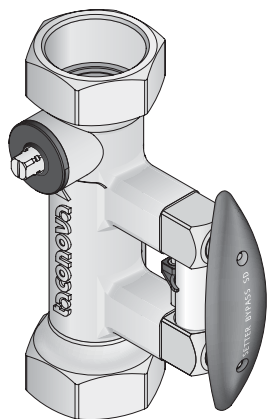


AV 23 SETTER Bypass SD



DN	Rp x Rp	L (mm)	
15	½" x ½"	142	7
20	¾" x ¾"	129	7
25	1" x 1"	152	8
32	1¼" x 1¼"	161	8
40	1½" x 1½"	173	12
50	2" x 2"	197	12

TB	100°C	
PB	10 bar	



a1

a2

a3

m1

m2

m3

m4

m5

- 223.2262.000 ☒ DN15
- 223.2360.000 ☒ DN20
- 223.2362.000 ☒ DN20
- 223.2460.000 ☒ DN25
- 223.2461.000 ☒ DN25
- 223.2561.000 ☒ DN32
- 223.2661.000 ☒ DN40
- 223.2861.000 ☒ DN50

r1

r2

r3

r4

r5

· Subject to modifications